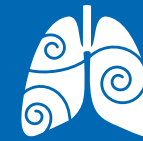
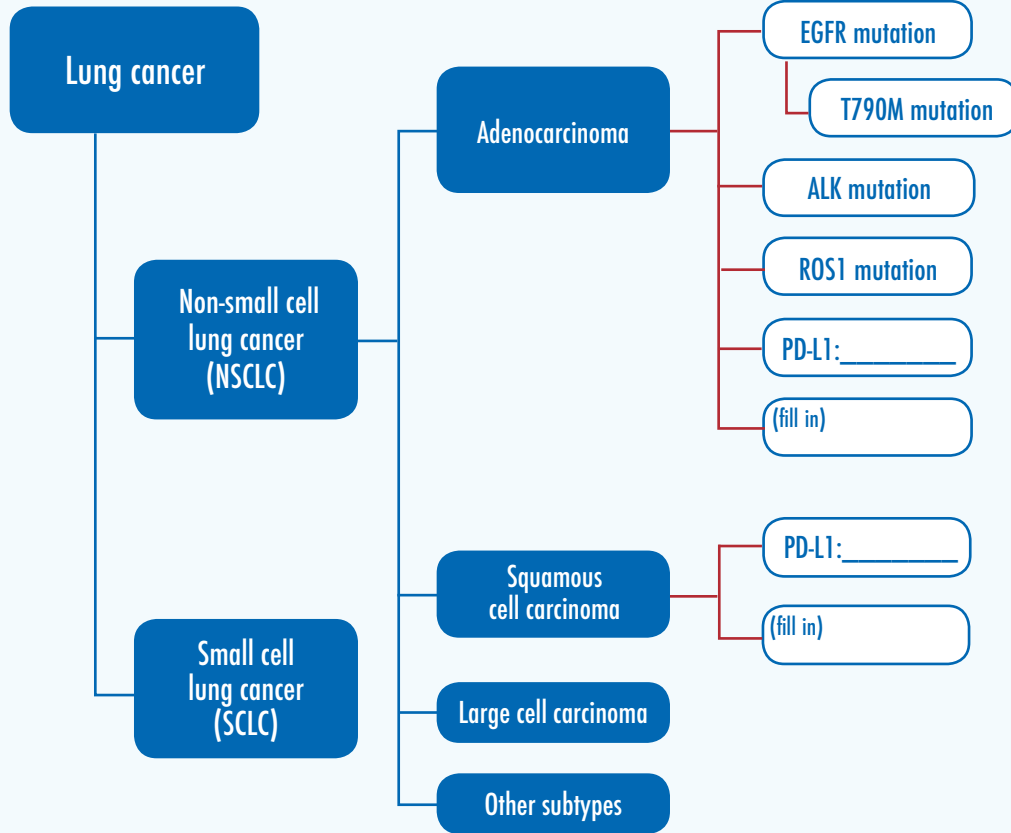


PERSONAL LUNG CANCER PROFILE

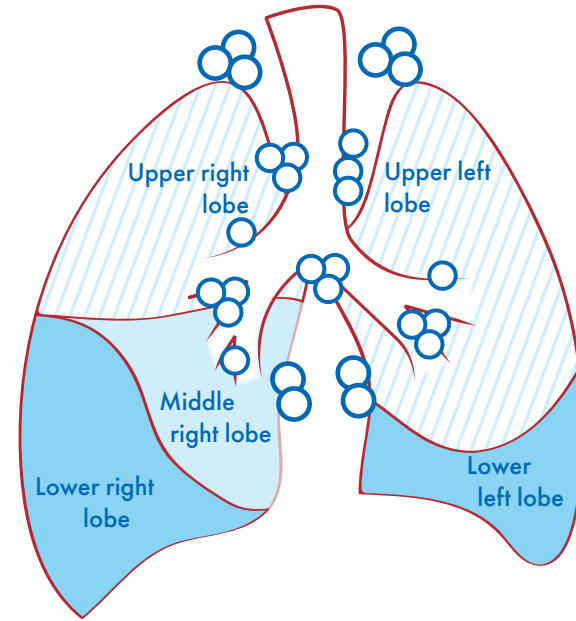
LUNG CANCER TYPE, LOCATION & STAGING



free to breathe

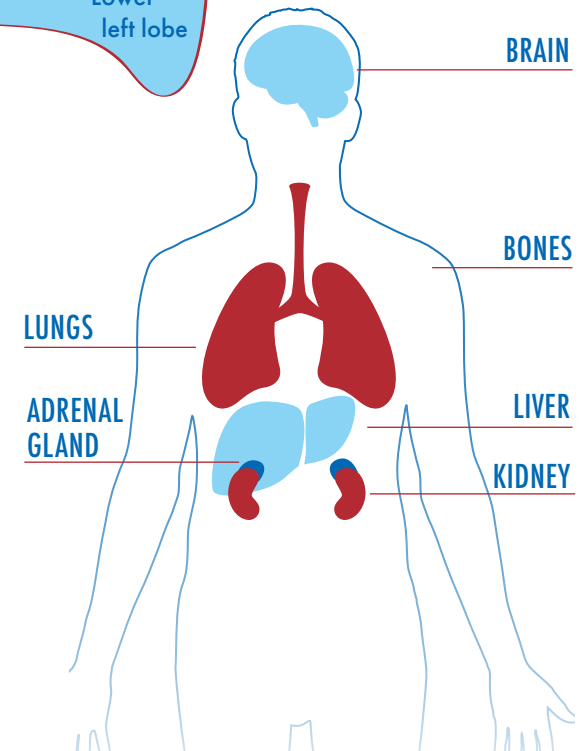


Providers: Use these graphics to indicate tumor locations.



LYMPH NODES

(Note: Actual number of lymph nodes in any one location varies from patient to patient)



SMALL CELL LUNG CANCER

- Limited stage
- Extensive stage

NON-SMALL CELL LUNG CANCER

- Stage IA
- Stage IB
- Stage IIA
- Stage IIB
- Stage IIIA
- Stage IIIB
- Stage IV



Lung Cancer Research
FOUNDATION

Free to Breathe and the Lung Cancer Research Foundation merged on Sept. 30, 2017. We are now known as the Lung Cancer Research Foundation.
lungcancerresearchfoundation.org

