

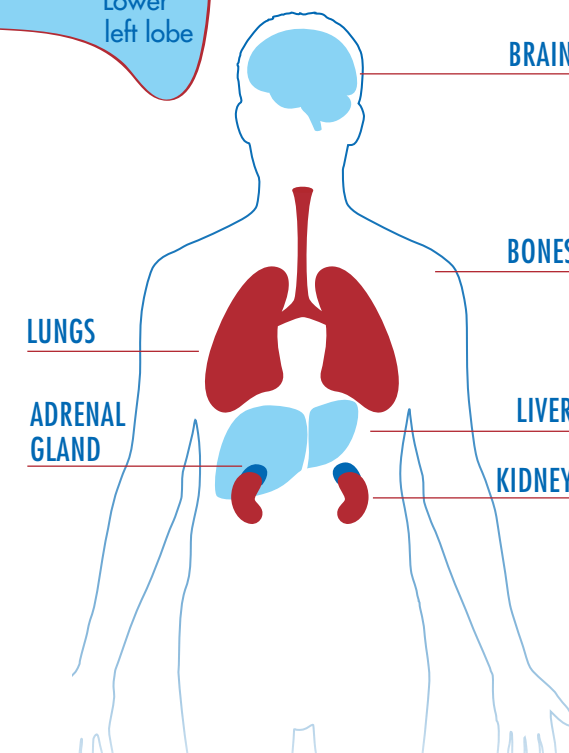
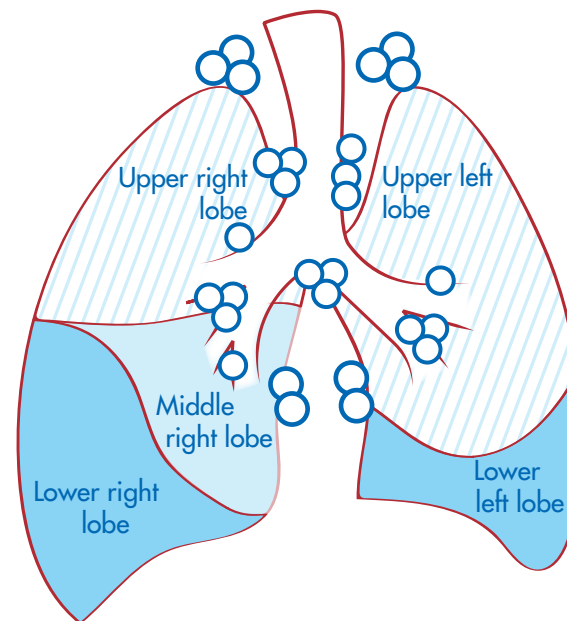
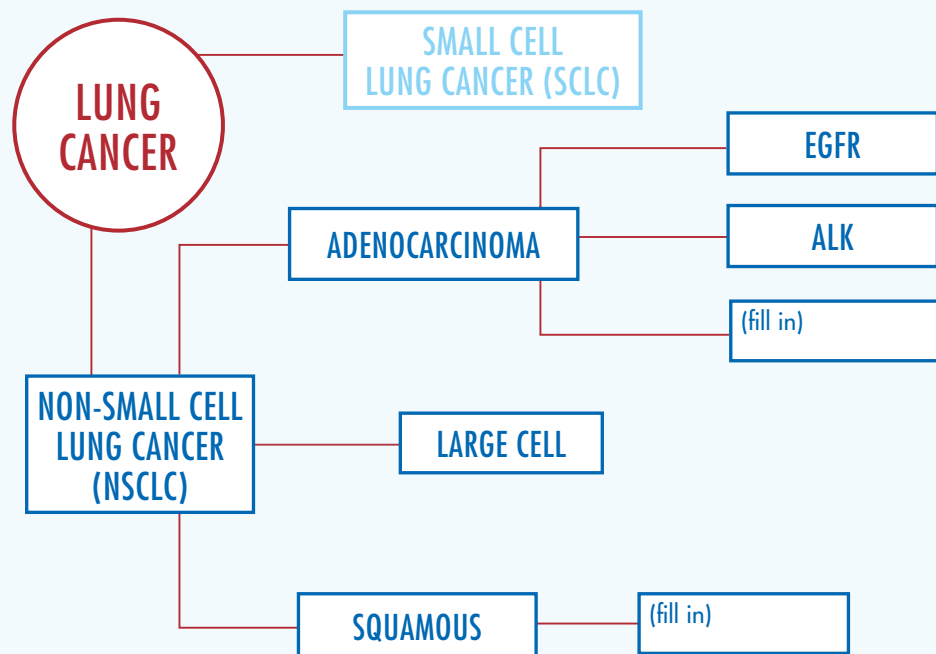
PERSONAL LUNG CANCER PROFILE

LUNG CANCER TYPE, LOCATION & STAGING



free to breathe
a partnership for lung cancer survival

Providers: Use these graphics to indicate tumor locations.



SMALL CELL LUNG CANCER

- Limited stage
- Extensive stage

NON-SMALL CELL LUNG CANCER

- Stage IA
- Stage IB
- Stage IIA
- Stage IIB
- Stage IIIA
- Stage IIIB
- Stage IV

FIND IN-DEPTH LUNG CANCER INFORMATION at freetobreathe.org/lung-cancer-info

Resource brought to you by Free to Breathe

Printing and distribution supported by Celgene Corporation

PERSONAL LUNG CANCER PROFILE

LUNG CANCER TREATMENTS



free to breathe
a partnership for lung cancer survival

Patient Name: _____ Doctor: _____ Date: _____

RECOMMENDED TREATMENTS

Surgery _____

Radiation _____

Chemotherapy _____

Targeted therapy _____

CLINICAL TRIAL RECOMMENDED? _____

